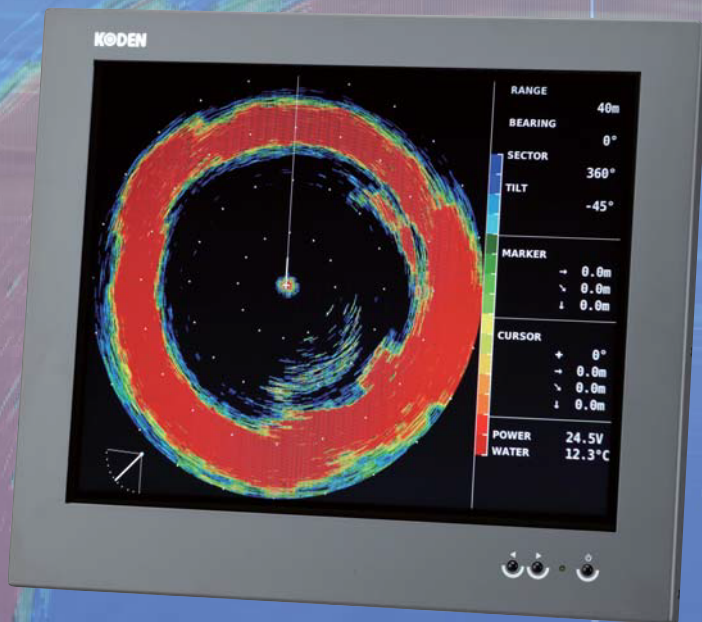


Digital Sonar

# KDS-5000BB

**DIGITAL**



LCD Monitor Owner supply



Junction Box



Processor unit



Hull unit



Operation unit

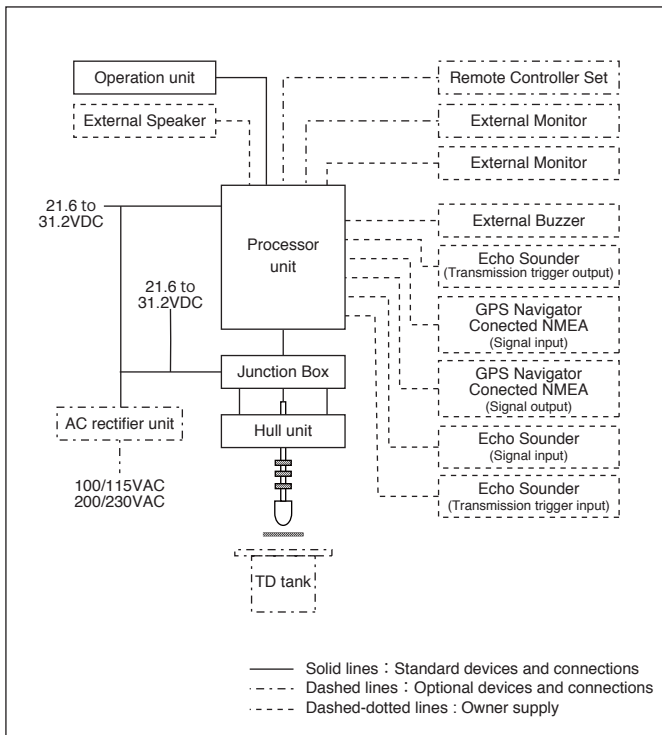
## Features

- ▶ DSP Technology (Resolution up by digital control)
- ▶ Space Saving Installation
- ▶ Black Box Type Sonar connect to any XGA type display (Owner supply)
- ▶ Easy Operation

## SPECIFICATIONS

Model	KDS-5000BB											
Output power (RMS)	1.5 kW											
Output frequency	180 kHz											
Tilt angle	+5° to -90° (1°step)											
Beam angle	10°											
TD stroke	180 to 380 mm (Recommended value 180 mm)											
Display size and type	Any monitor with XGA resolution (Owner supplied)											
Display resolution	1024 x 768 (XGA)											
Basic ranges	8 ranges freely set											
Range units	Meters, Feet, Fathoms, Braccia can be selected											
Scanning sector angles	Sonar mode	5°step: 5°, 25°, 45°, 85°, 125°, 165°, 205°, 360°										
		10°step: 10°, 30°, 50°, 90°, 130°, 170°, 210°, 360°										
		15°step: 15°, 45°, 75°, 105°, 135°, 165°, 225°, 360°										
Bottom scan mode	Sonar mode	20°step: 20°, 60°, 100°, 140°, 180°, 220°, 260°, 360°										
		3°step: 3°, 27°, 45°, 63°, 93°, 117°, 147°, 177°										
		5°step: 5°, 25°, 45°, 65°, 95°, 115°, 145°, 175°										
360° Scanning time	Scanning range (m)	20	40	60	80	100	120	160	180	200	240	400
(extracts)	Scanning time (sec.) 5° step	5.7	7.6	9.5	11.4	13.3	15.3	19.1	21.0	23.0	26.8	42.2
	Scanning time (sec.) 10° step	4.1	5.0	6.0	7.0	8.0	8.9	10.8	11.8	12.7	14.7	22.3
	Scanning time (sec.) 15° step	3.5	4.1	4.8	5.4	6.1	6.7	8.0	8.6	9.3	10.6	15.7
	Scanning time (sec.) 20° step	3.2	3.7	4.2	4.6	5.1	5.6	6.6	7.1	7.5	8.5	12.3
Bearing center	every 5°step selectable											
Presentation modes	Sonar mode + Data display, Off-center mode + Data display Off-center on the whole screen, Bottom scan mode + Data display, Sounder Mode + Data display											
Data display	Sector center angle, Tilt angle, Tilt angle indicator, Ring marker, Cross Cursor Compass (option), Navigation (option)											
Off-Center	Fore, Back, Left, Right											
Target lock	Reverse, Horizontal, Horizontal + vertical, Marker + Horizontal											
Presentation colors	8/16 colors											
Functions	Operation mode (3 modes), Off-center (4 changes), Train correct, Power rejection Gain adjust, Temperature adjust, Pulse width control, TVG change, Target lock Color change (4 types + 2 types of color palette settings), Dynamic range Interference rejection, Color rejection, Filter (OFF/1/2), Gain control, Far gain control External trigger synchronization, Trigger signal output Hoist sensor lamp, Audio (optional speaker required), Stabilizer (up to 25°controllable) Transducer unit automatic retract (Navigator connect required), Full-screen gain control											
Language	English, Japanese											
External Input	Trigger input, Navigator input, External sounder input, Remote controller input											
External Output	External buzzer, Trigger output, NMEA output, XGA output, Audio output USB terminal (memory for setting values)											
NMEA ports	Total 1 : input / output											
Power supply	Processor unit	21.6 to 31.2 VDC										
	Hull / lower unit	21.6 to 31.2 VDC										
Power consumption	Processor unit	70 W or less (24 VDC)										
	Hull / lower unit	70 W or less (24 VDC)										
Operating temperature	-15 °C to +55 °C											
Water protection	-											

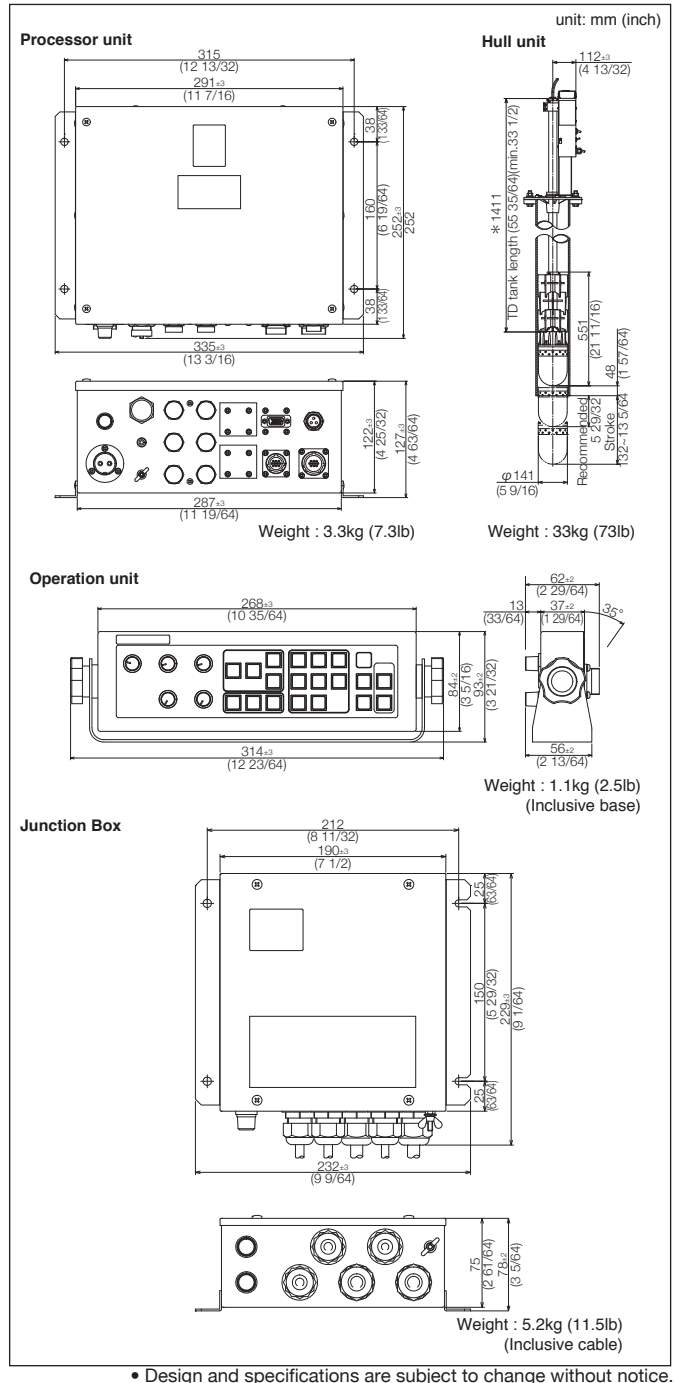
## CONNECTIONS



## EQUIPMENT LIST

Standard equipment	Processor unit	1
	Operation unit	1
	Hull unit	1
	Junction box	1
	Accessories for Processor unit	1
	Installation materials for Hull unit	1
	Accessories for Junction box	1
	DC power cable	1
	Communication cable	1
	Operation manual	1
Options	Remote Controller Set, XGA Connect Cable Assy, Trigger Output Cable, Junction Box Mounting Kit, TD tank, TD shaft, Shaft guides, Shaft guides with adjuster, Grease, AC rectifier unit, AC power cable	

## DIMENSIONS AND WEIGHT



**KODEN** Koden Electronics Co., Ltd.

Tamagawa Office:  
 2-13-24 Tamagawa, Ota-ku, Tokyo, 146-0095 Japan  
 Tel: +81-3-3756-6501 Fax: +81-3-3756-6509  
 Uenohara Office:  
 5278 Uenohara, Uenohara-shi, Yamanashi, 409-0112 Japan  
 Tel: +81-554-20-5860 Fax: +81-554-20-5875

overseas@koden-electronics.co.jp

[www.koden-electronics.co.jp](http://www.koden-electronics.co.jp)



**Safety precaution**

To ensure proper and safe use of the equipment, please carefully read and follow the instructions in the Operation Manual.

For details, please contact: